

# 2

## Bedroom Premium

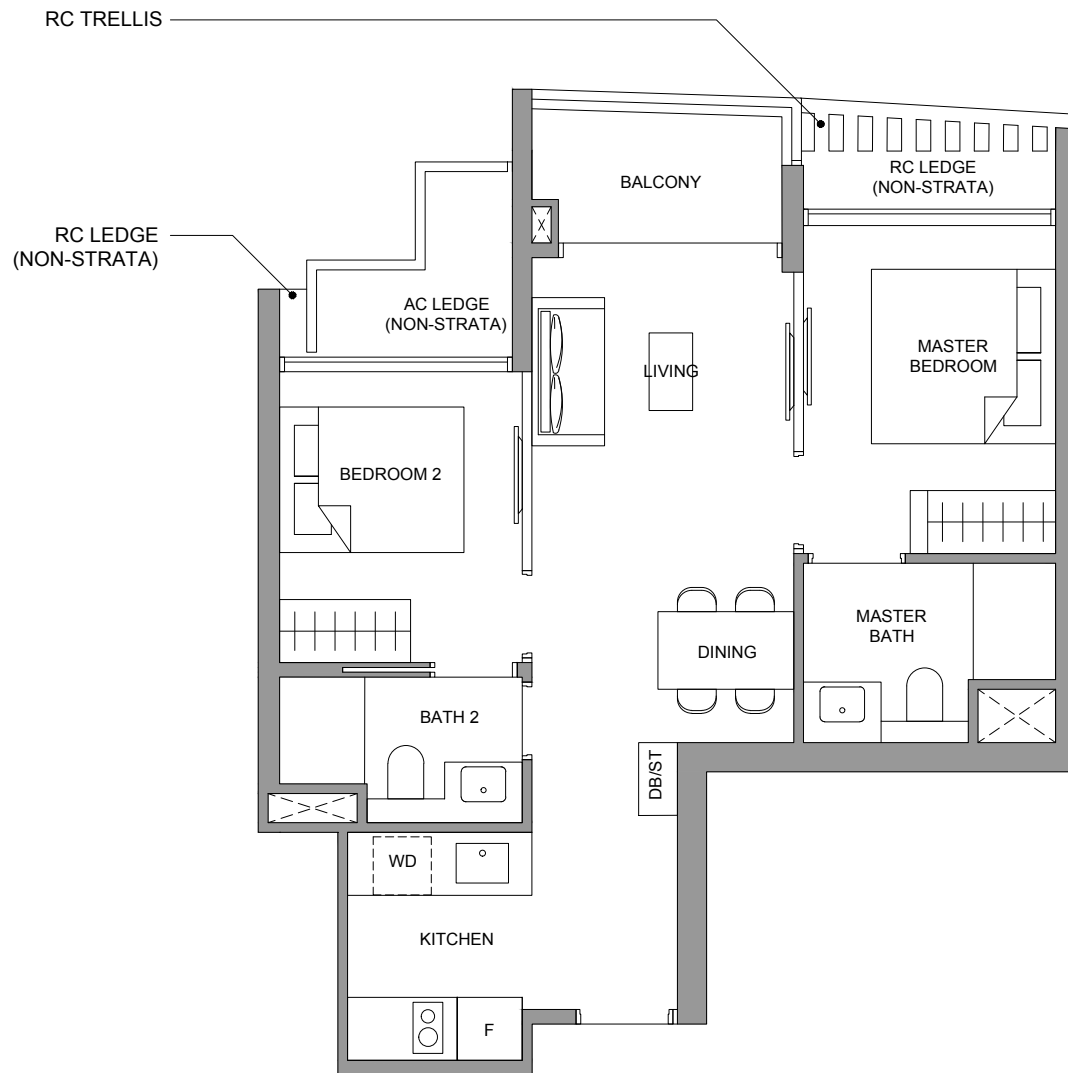
### Type BP2

Area

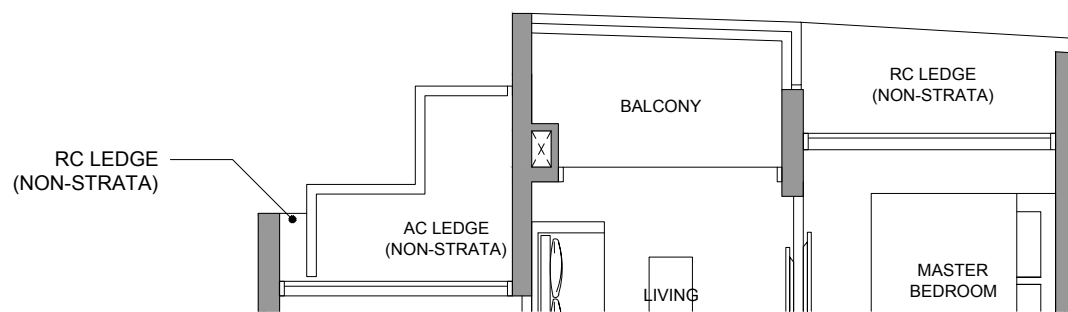
Units

56 sq m / 603 sq ft

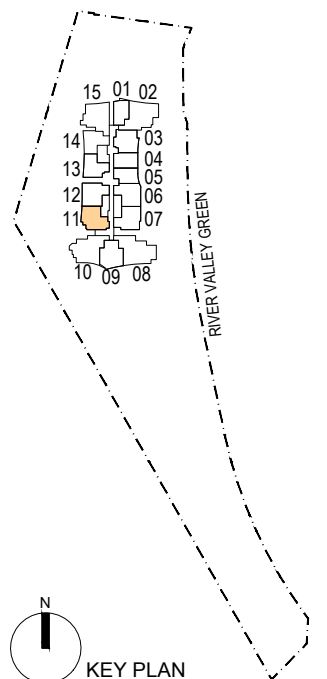
#02-11 to #36-11



#03-11 to #36-11



#02-11



#### LEGEND

- |          |   |   |   |
|----------|---|---|---|
| F        | INTEGRATED FRIDGE                                     | ☒ | SERVICES VOID SPACE (EXCLUDED FROM STRATA AREA)   |
| ST       | STORAGE   | ☒ | RAINWATER DOWNPIPE SHAFT SPACE (EXCLUDED FROM STRATA AREA)  |
| DB       | DISTRIBUTION BOARD                                    | — | WALLS NOT ALLOWED TO BE HACKED OR ALTERED (INCLUDING BY WAY OF DRILLING). WALL THICKNESS EXCLUDES FINISHES. |
| WD       | WASHER CUM DRYER                                      |   |   |
| RC LEDGE | REINFORCED CONCRETE LEDGE (EXCLUDED FROM STRATA AREA) |   |   |

0 0.5 1 2 3 4 5 Metres

Printing may alter the scale of the drawing. Please verify the scale on the above scale bar.

N  
KEY PLAN  
NOT TO SCALE

Area includes air conditioner (AC) ledge, balcony and strata void where applicable. RC ledge do not form part of the unit strata area. AC ledge railing to be 150mm depth. The above plans are subject to change as may be approved by the relevant authorities. All floor plans are approximate measurements only and are subject to government re-survey. These are for the purpose of visual presentation only. The balcony and PES shall not be enclosed unless with the approved balcony screen. The installation and cost of the screen shall be borne by the purchaser.